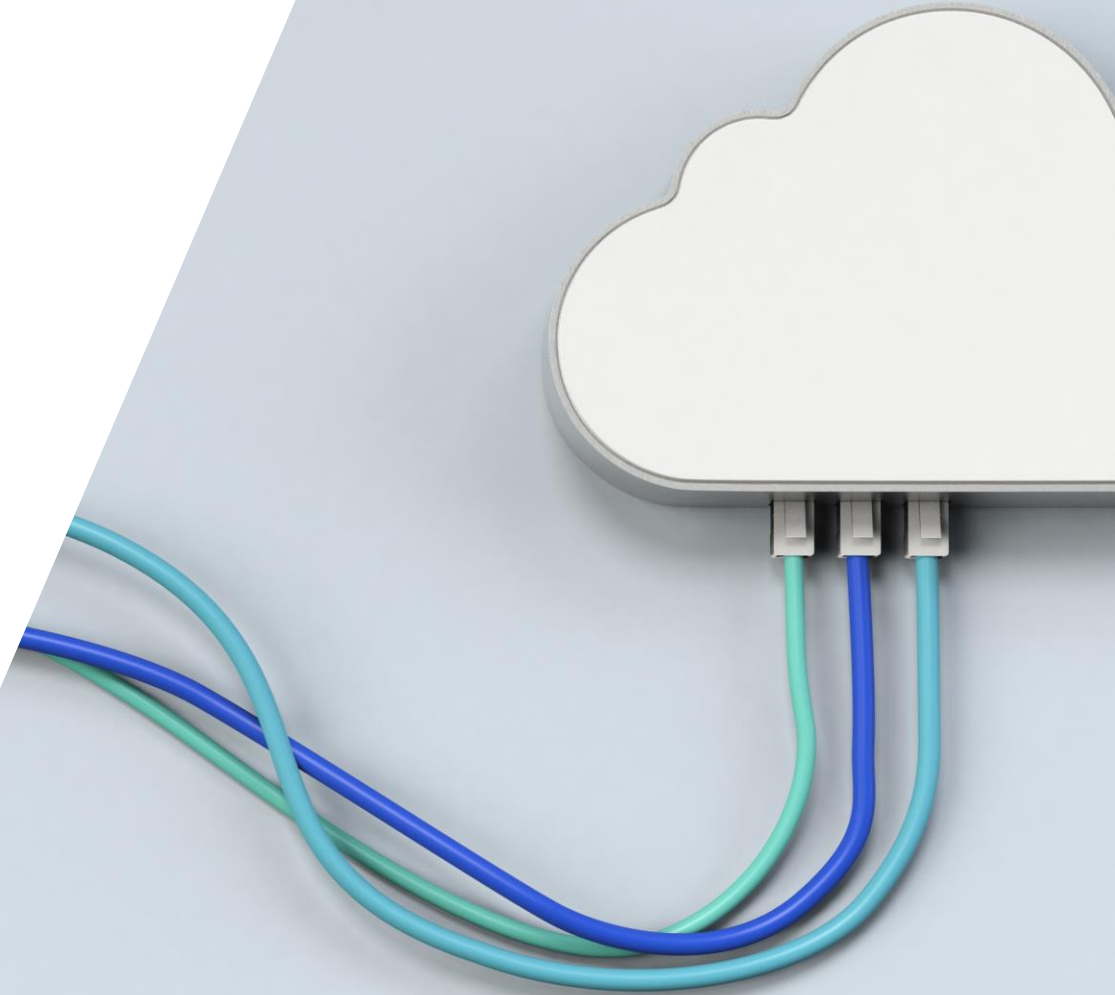




## **Sycomp Storage fueled by IBM Storage Scale**



# Agenda

- Who is Sycomp?
- Sycomp Value Proposition
- How do customers use Sycomp Storage?
- Example: Genomic Data Processing



# WHO WE ARE

The go-to global partner for our mutual client IT data center, cloud, security, and services needs.

## About Sycomp

Sycomp is a Globally **trusted** advisor, we **advocate** the needs of our clients and deliver complex IT solutions and services for organizations all over the world. We're a highly skilled, global systems integrator providing comprehensive, fast, easy, and competitive solutions across the globe.

With 29 years of experience, we help organizations execute complex global rollouts on schedule, on budget, and without incident.



Delivered and implemented a wide portfolio of top-tier technology solutions and services in over 150 countries.



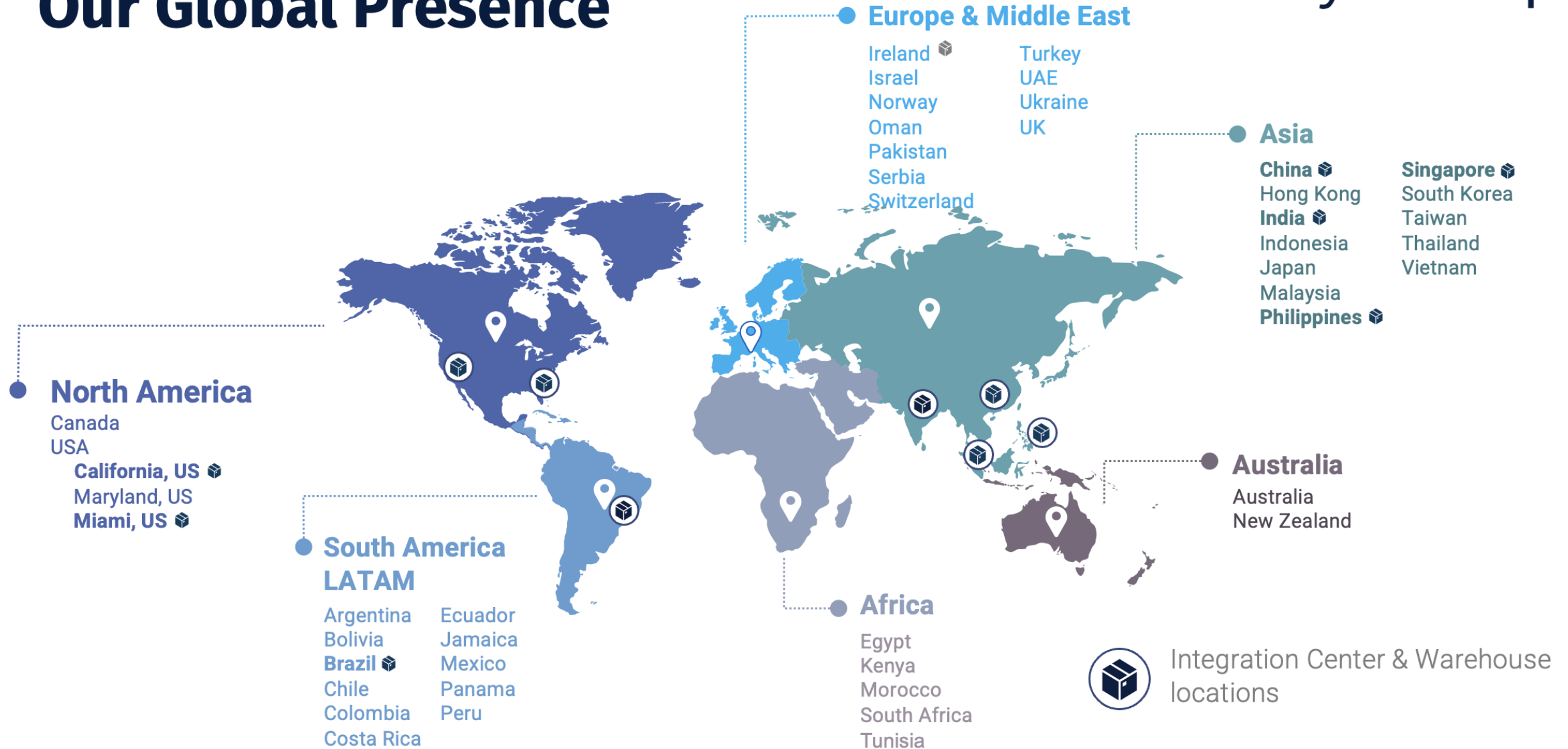
Sycomp is a Woman and Minority-Owned Business entity nationally certified by the Western Regional Minority Supplier Development Council.



NAICS Codes:

334111	334118
541519	334614
334112	519130

# Our Global Presence



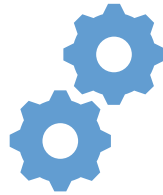
# Why Sycomp Storage?



## Sycomp

30 Years of HPC and system integration experience

Working relationship with IBM Storage Scale development team



## We Deliver

Industry proven IBM Storage Scale

Best practices applied automatically

We test upgrades and new versions



## Cloud Benefits

The efficiencies of Public Cloud platforms

We can rapidly respond to customer requests and issues

Sycomp can deploy and test in-house without affecting customers environment.

# What is Sycomp Storage?

## Marketplace offering

- Supported by Sycomp, an IBM Business Partner
- Deployed in the customer tenant
- Software pricing from Sycomp
- Custom or choose from preconfigured options
- Deploys in minutes

## Managed service

- Deployment design
- 7x24 Software Support – How to and break fix
- Customization
- Seamless bidirectional data mobility between on-premises and cloud
- Cloud provider supports the infrastructure.

## High-Performance

- Scale to > 300 GiB/s, millions of IOPs, PiB of data
- Sub-ms latency
- Direct access to datasets via Object and Storage Scale
- Reduce storage costs by caching only “hot” data



# Technical Details



# Basic Deployment

## Cluster Type

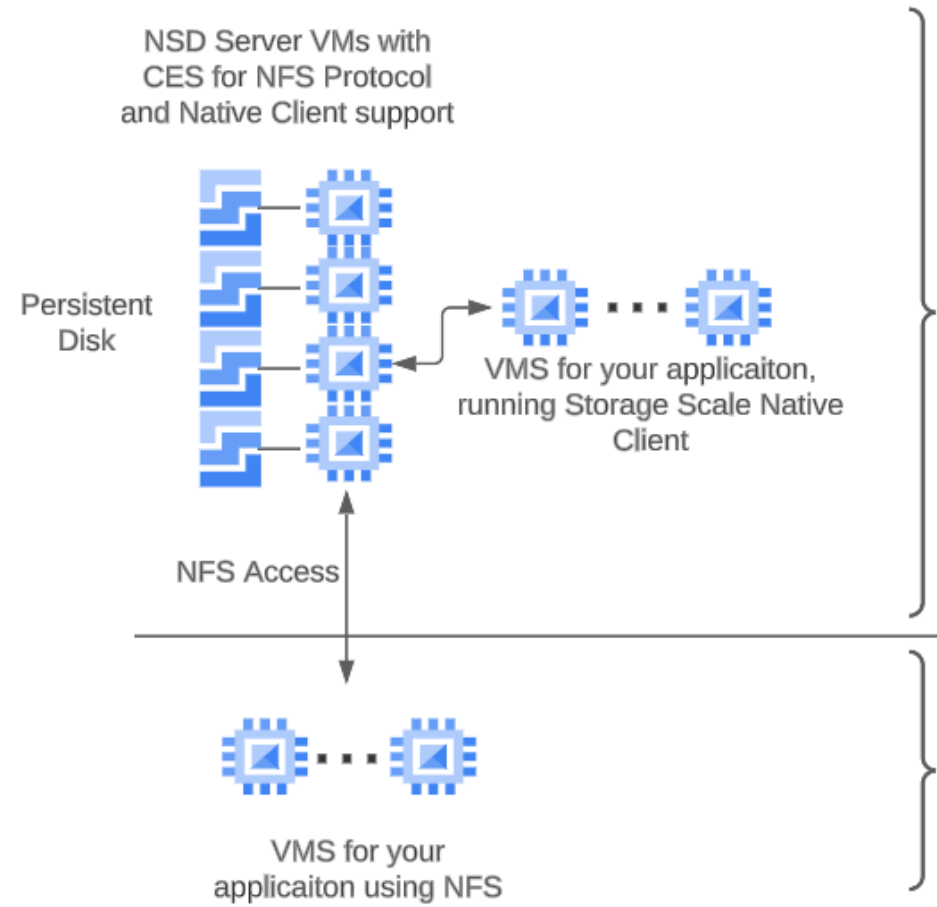
- Persistent or Ephemeral
- Combine storage type and machine type.

## Data access

- NFS
- NSD

## Scale up

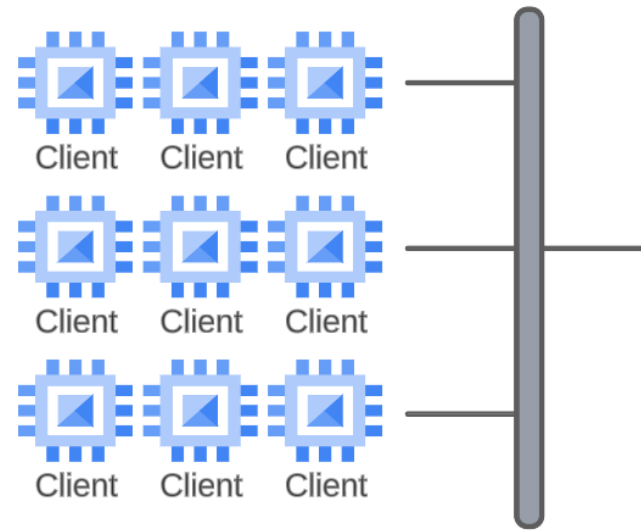
- Storage
- Storage Servers
- NFS Servers
- Application VMs



# Client Only Cluster

## Use Cases

- Persistent data and ephemeral compute
- Storage and compute owned by different groups
- Integration with third party tools like Slurm



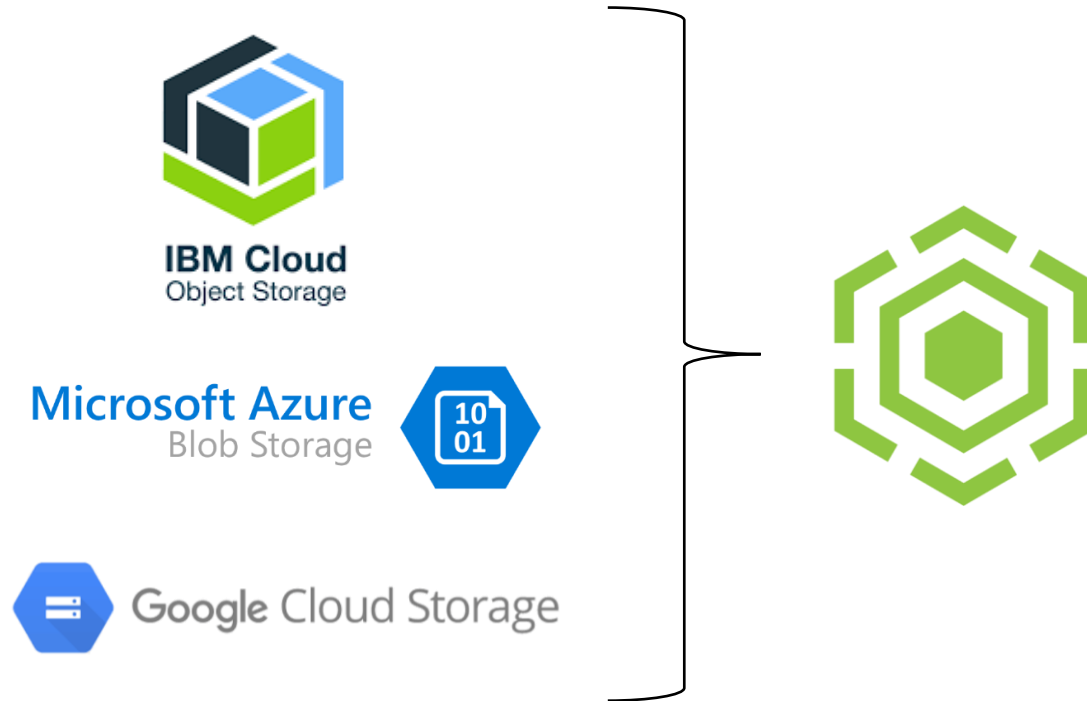
Client Only Cluster



Sycomp Storage Fueled by  
IBM Storage Scale

Existing Sycomp Storage Cluster

# Using Object Storage



## Use Cases

- Long term storage in Object
- Shared access from multiple regions or consumers
- Integration of public datasets (GCS, Azure Blob, IBM Cloud Object Storage, AWS S3)

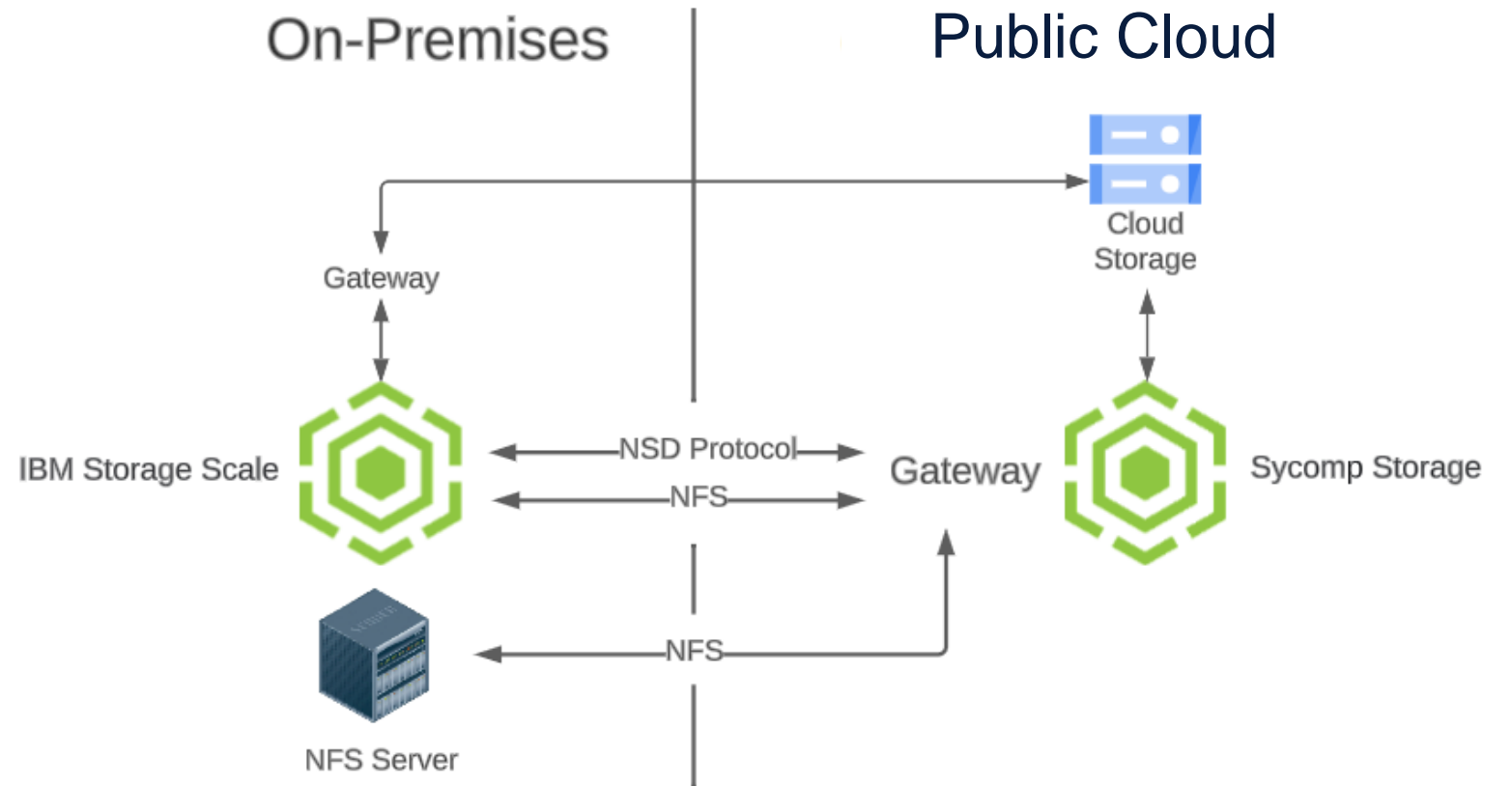
# Hybrid Cloud

## On-premises to cloud

- Bursting
- Migration
- Sharing

## Access Method

- Object
- NFS
  - Storage Scale NFS
  - Any NFS server



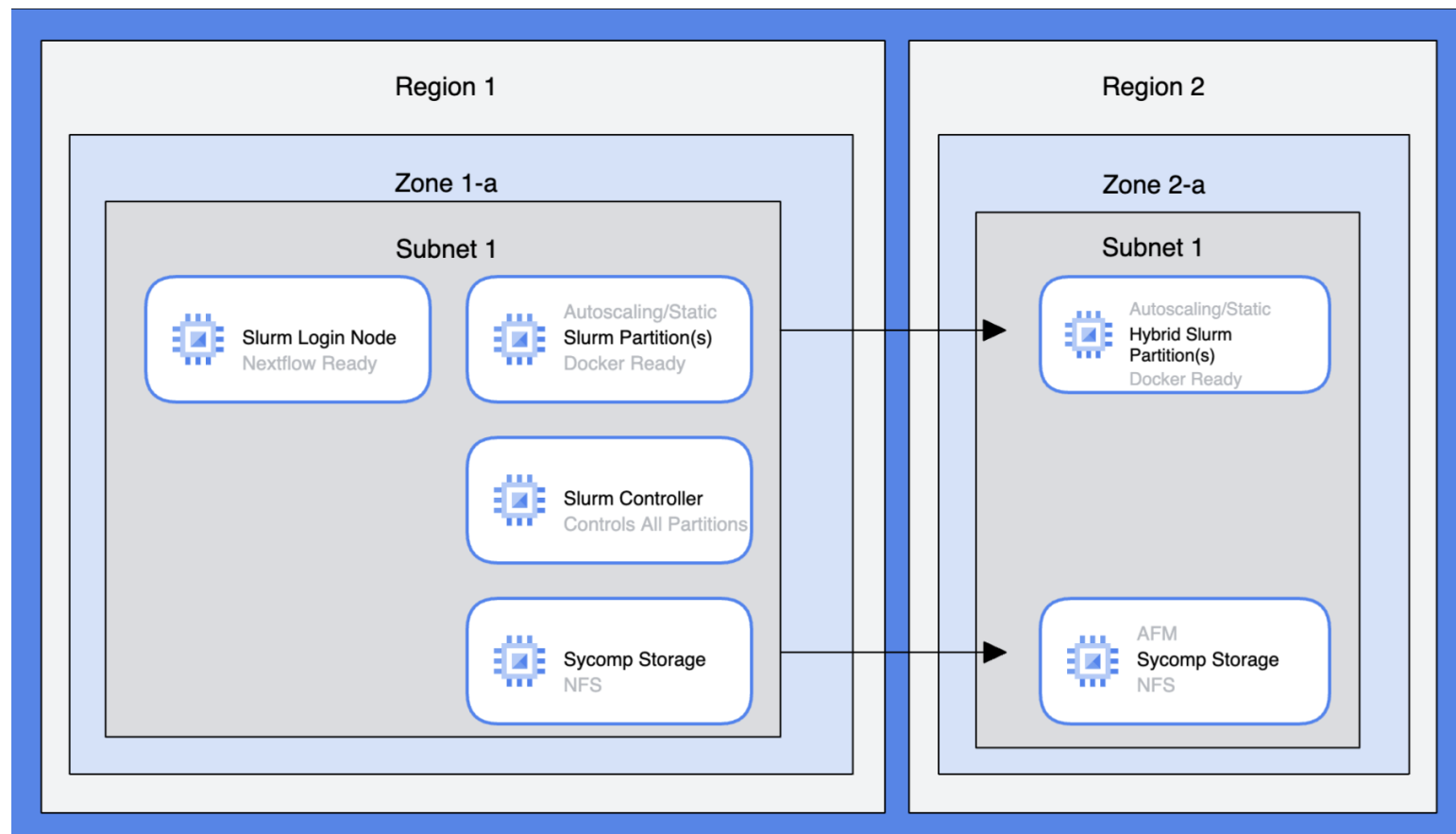
# Use Cases

- AI/ML
- Analytics
- Genomic Pipelines
- NFS to object gateway
- On-demand data bursting
- Migrating on-premises applications

## Industries

- Electronic Design Automation
- Financial
- Healthcare
- Education
- Automotive
- Industrial
- Research

# Genomics pipeline example on Google Cloud



## Hybrid Design

- Slurm Multi-Partition
- Sycomp Storage Global Namespace



## GET IN TOUCH WITH US



JZ  
**Global Systems Solutions Executive**  
[jz@sycomp.com](mailto:jz@sycomp.com)

Scott Fadden  
**Senior HPC Architect**  
[sfadden@sycomp.com](mailto:sfadden@sycomp.com)



950 Tower Lane #1785  
Foster City, CA 94404



831-251-5122



[www.sycomp.com](http://www.sycomp.com)