



Spectrum Scale User Group

Thomas Ahrens, Senior Architect

May 9th, 2019

ATEMPO
preserving data ecosystems

Atempo-Wooxo Group

European Software editor with a global footprint in Data Protection and Data Movement markets: USA, China, South Korea, Singapore, Germany, UK, France.

Solutions for

- Data Protection
- Data Management
- High Performance Archiving
- Data Movement

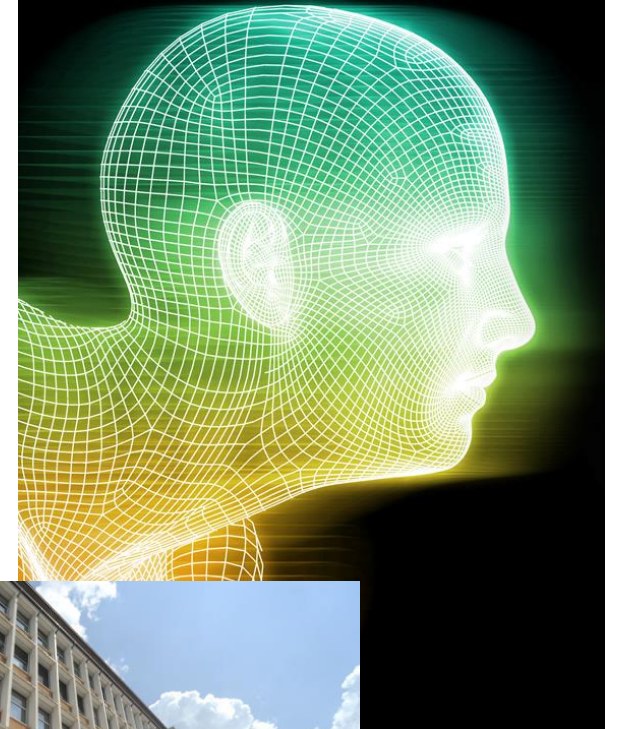
A graphic illustration featuring a large globe with a grid of dashed lines. In front of the globe, a group of seven stylized human figures in business attire are standing. The entire graphic is set against a dark blue background.

+2000 CUSTOMERS

COMPANY IS PRESENT 20+ YEARS AT THE MARKET

Atempo-Wooxo opens their new AI research centre for innovation in data protection

- ✓ Atempo Analytics
 - Increase value of the current product portfolio
 - New standalone solution
- ✓ Develop ML and AI to address tomorrow's challenges
 - Smart Automation
- ✓ 16 dedicated resources by year's end (data scientist)



Miria for Data Moving

Moving data where necessary with direct and shared access for remote teams while maintaining a high level of security



Miria for Backup

Rapidly back up data from damage and loss and ensure lasting protection all from a single centralized platform

Miria for Migration

Migrate very large data volumes and billions and files efficiently between heterogeneous storages and file systems

Miria for Archiving

Free up storage space on high performing primary storages and manage storage growth requirements



Miria engine delivers performance and manages petabytes of data and billions of small files on site and in hybrid environments

Solution strengths



Designed for large volumes

- Billions of files
- Volumes in excess of 200 TB but capable of small files



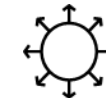
Designed for rapid and high performance data movement



FastScan technology for GPFS, Isilon, NetApp, Qumulo, Huawei



Incremental forever



Snapstor technology for true DR



Open storage formats
Zero vendor lock-in
and Open REST API



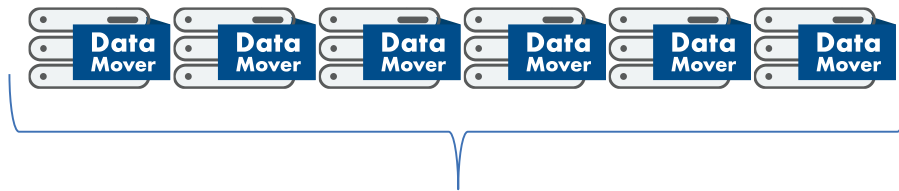
Manage your data:
Move, backup, archive



DM Multithreading and pool, load balancing

Some Numbers

Volumes our customer are managing



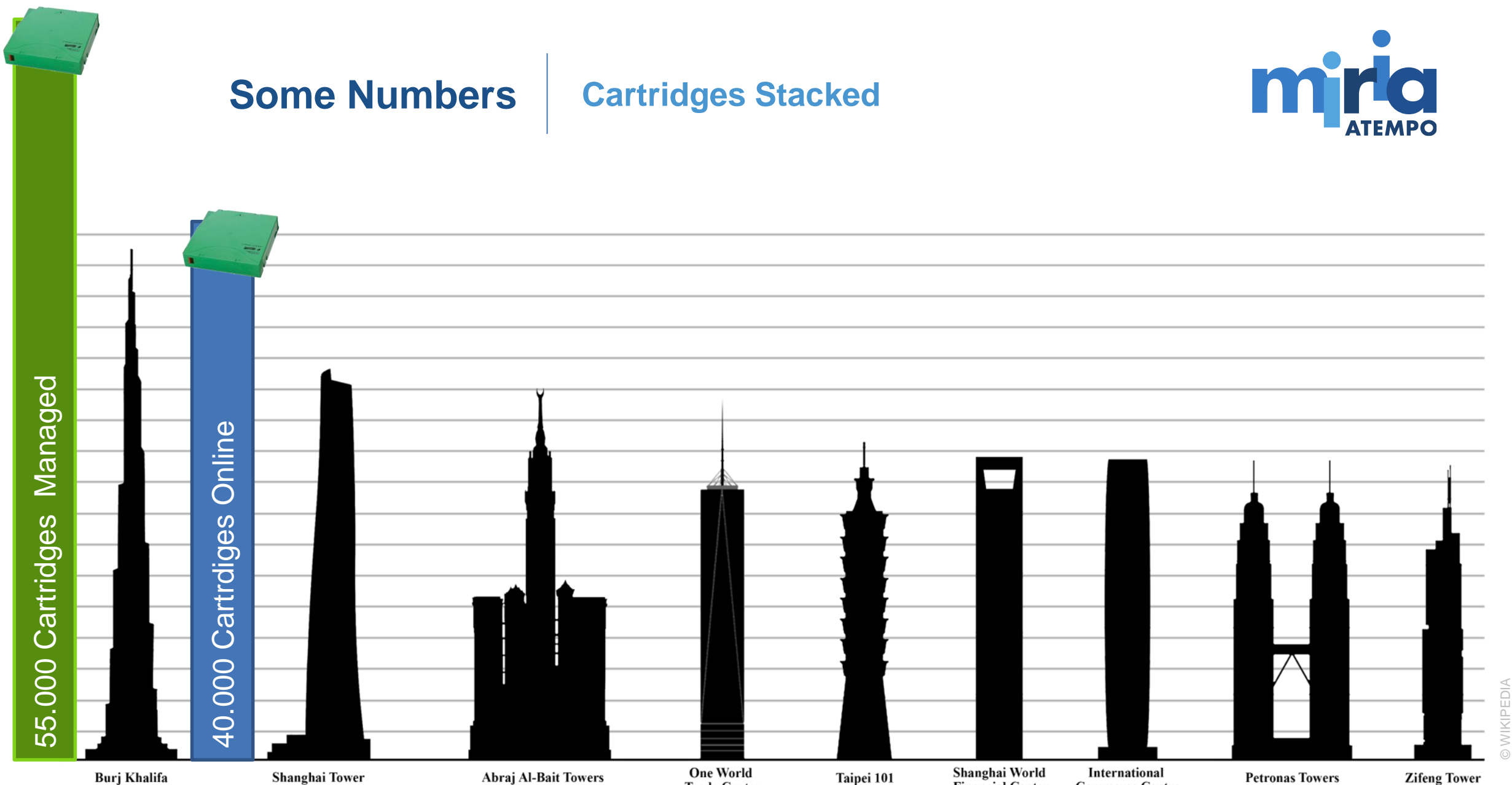
36 GB/s

30 PB/d



Some Numbers

Cartridges Stacked





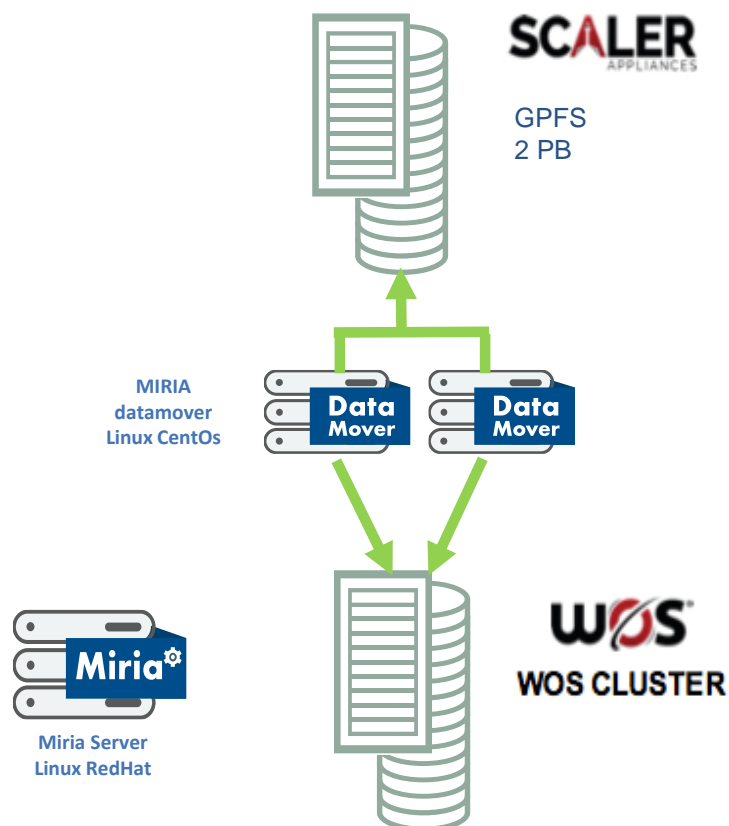
Use Cases

BACKUP, INSTANT DISASTER RECOVERY, ARCHIVE, MIGRATION

miria
ATEMPO

Miria for Backup

GPFS backup



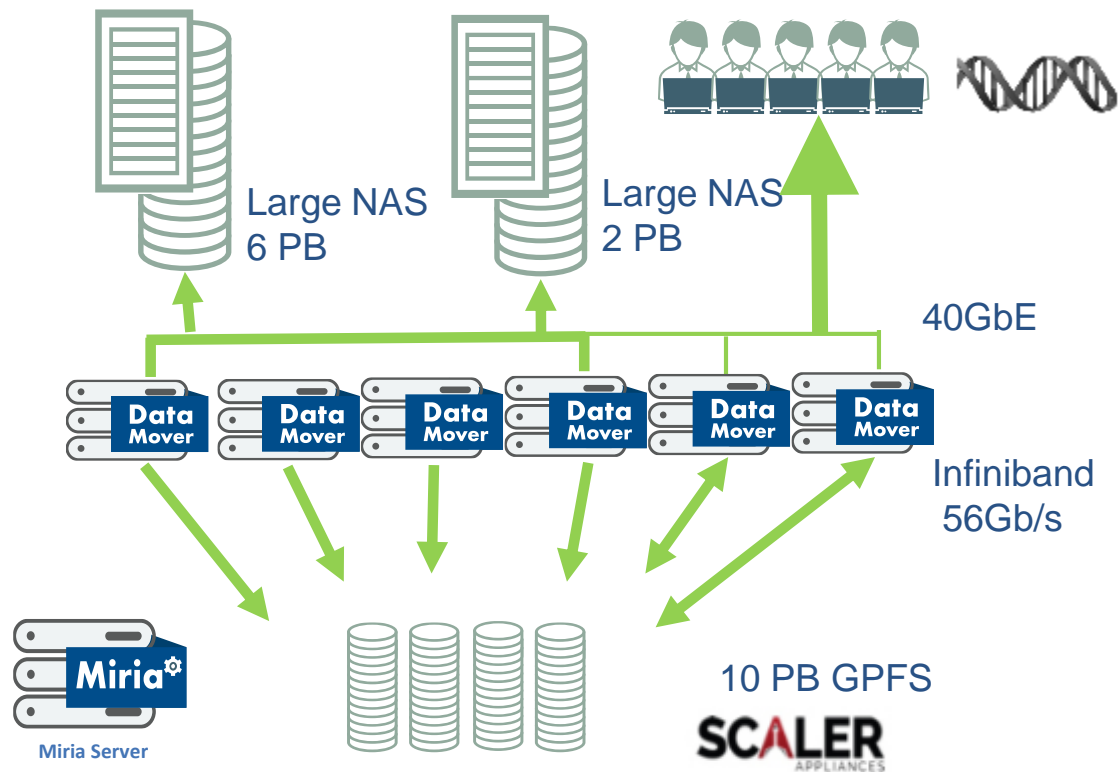
Customer Requirements

- Having a single product for backup and archive
- Possibility to use API/CLI to create automatic archiving workflow
- Ability to protect GPFS attributes
- Ability to simultaneously create two copies
- Having a UI to allow R&D people to archiving their projects

Technical Environment

- Research department with 2 PB of a GPFS
- 3 billions of files (large files and very small files)
- Miria Server runs on Linux RH 7.3 (Bi-pro 20cores/CPU, 128GB)
- Two Miria DM are running on CentOS 6.7 (Bi-pro 16cores/CPU, 32 GB)
- Infiniband 56Gb/s connection to the GPFS
- 2*10Gbe network connections to the Object Storage (performance: 7TB/h)

Reduced Backup Window



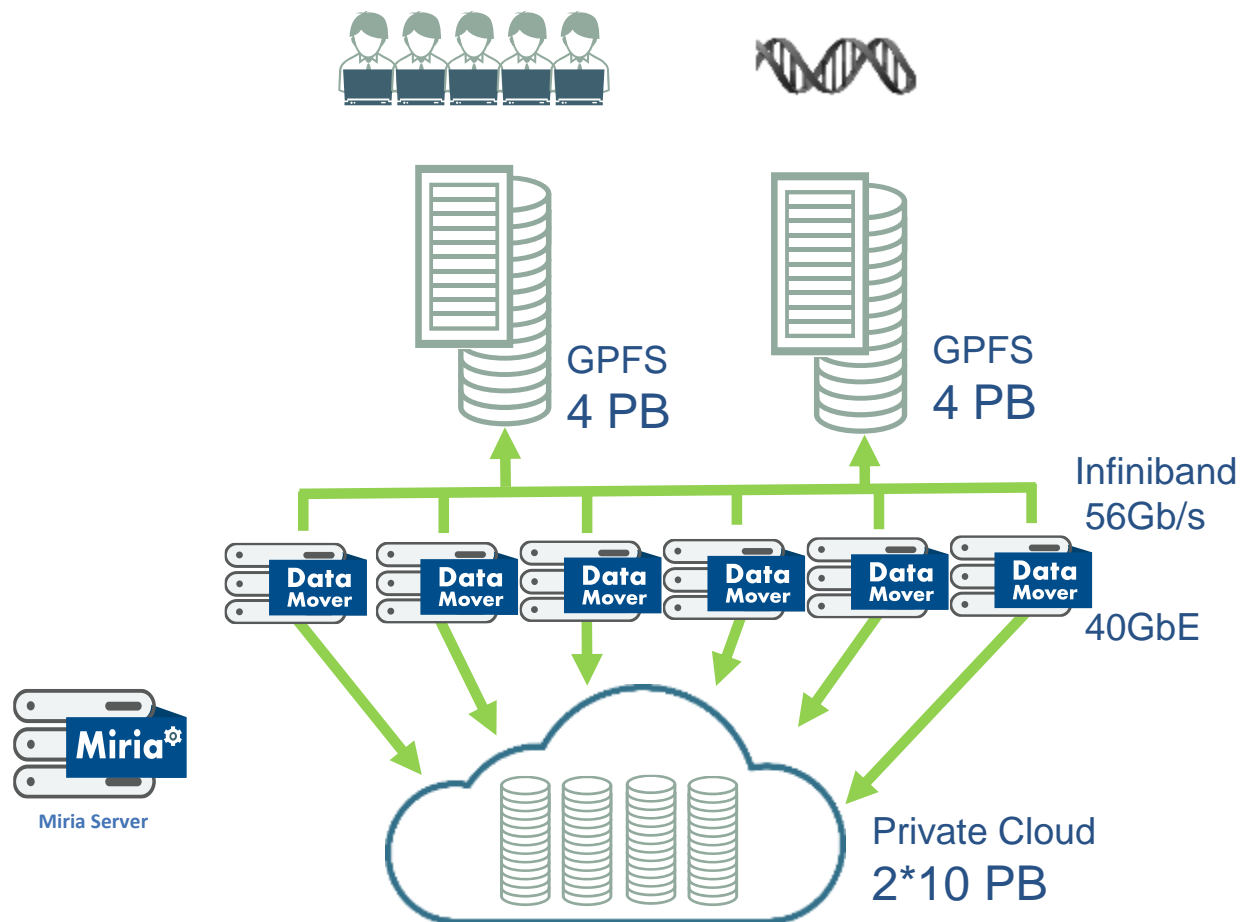
Challenge:

- 8 PB scale-out NAS
- 5% daily changes

Solution:

- FastScan Isilon & NetApp
- Incremental Forever
- On-demand restore: file by file or batch,
- ACLs preservation → Cross platform restore

Direct access data for Instant
Disaster Recovery



Challenge:

- Save volume on primary GPFS
- Preserve and share data assets

Solution:

- Retention policies depending on targets
- Integration with their applications & workflows
- Classification plans
- ACL rights management
- Metadata pushed on Object Storage

Storage Cost under Control
Long term preservation

ATEMPO

preserving data ecosystems

